

# BE STREETCAR SAFE

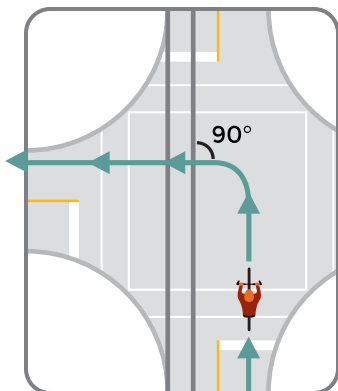
BIKE SAFETY



# BIKE SAFETY



Streetcars share the road with cyclists, but streetcar tracks can pose some special challenges for bikes and other wheeled vehicles.



- Cross tracks at right angle or in a straight line.
- Be alert and use caution when riding near streetcars and streetcar tracks.
- Be a safe cyclist - always wear a helmet and other protective gear when riding.
- Look and listen...never cross in front of a moving streetcar. Streetcars take longer to stop than other vehicles.
- Use caution - tracks can be slippery when wet.
- Beware of the door zone - watch for motorists opening vehicle doors into your travel space as you pass; don't swerve into the path of other vehicles or the track gap.



- Special signs are posted along the streetcar route to remind cyclists about the track gap, particularly when turning corners onto the streetcar route.



For more information, visit [cincinnatistreetcar.com](http://cincinnatistreetcar.com)