

Final Development Plan for the
North Garage in PD-83,
FC Cincinnati Stadium
in the West End

Staff Conference

May 20, 2020

Welcome and Agenda

1. Welcome & Housekeeping
2. Brief presentation by City Planning staff and the applicant
3. Question & Answer
 - Please save all questions/comments until Q&A
 - Staff will unmute each participate one at a time
 - You may use “raise hand” function in the chat bar if you have a follow-up question

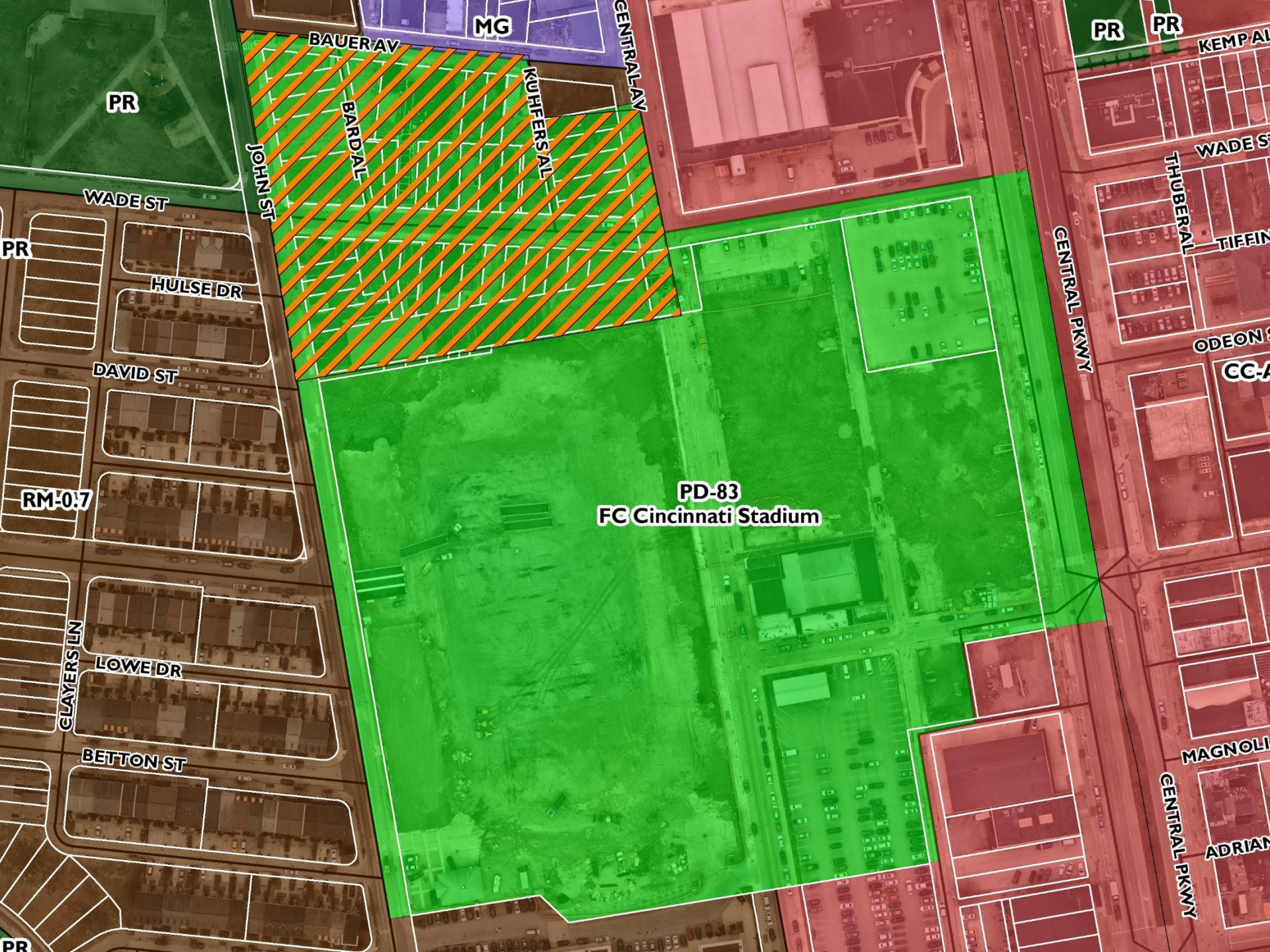
Housekeeping

- Please remain muted. City staff will unmute during question & answer.
- Chat Bar
 - Use the chat bar for tech-related issues or questions
 - Do not use the chat bar to ask project-specific questions

Purpose of Staff Conference

A staff conference is a public meeting to discuss the Final Development Plan and allow for staff to obtain feedback about the project

- The applicant is here to answer questions about the project
- City staff is here to facilitate the meeting and answer any process related questions



PD-83
FC Cincinnati Stadium

PR

MG

PR

PR

JOHN ST

BAUER AV

KUHFRS AL

BARDAL

CENTRAL AV

KEMPA

WADE ST

WADE ST

THUBERAL

TIFIN

PR

HULSE DR

ODEON

CC-A

DAVID ST

RM-0.7

PD-83

FC Cincinnati Stadium

CENTRAL PKWY

CLAYERS LN

LOWE DR

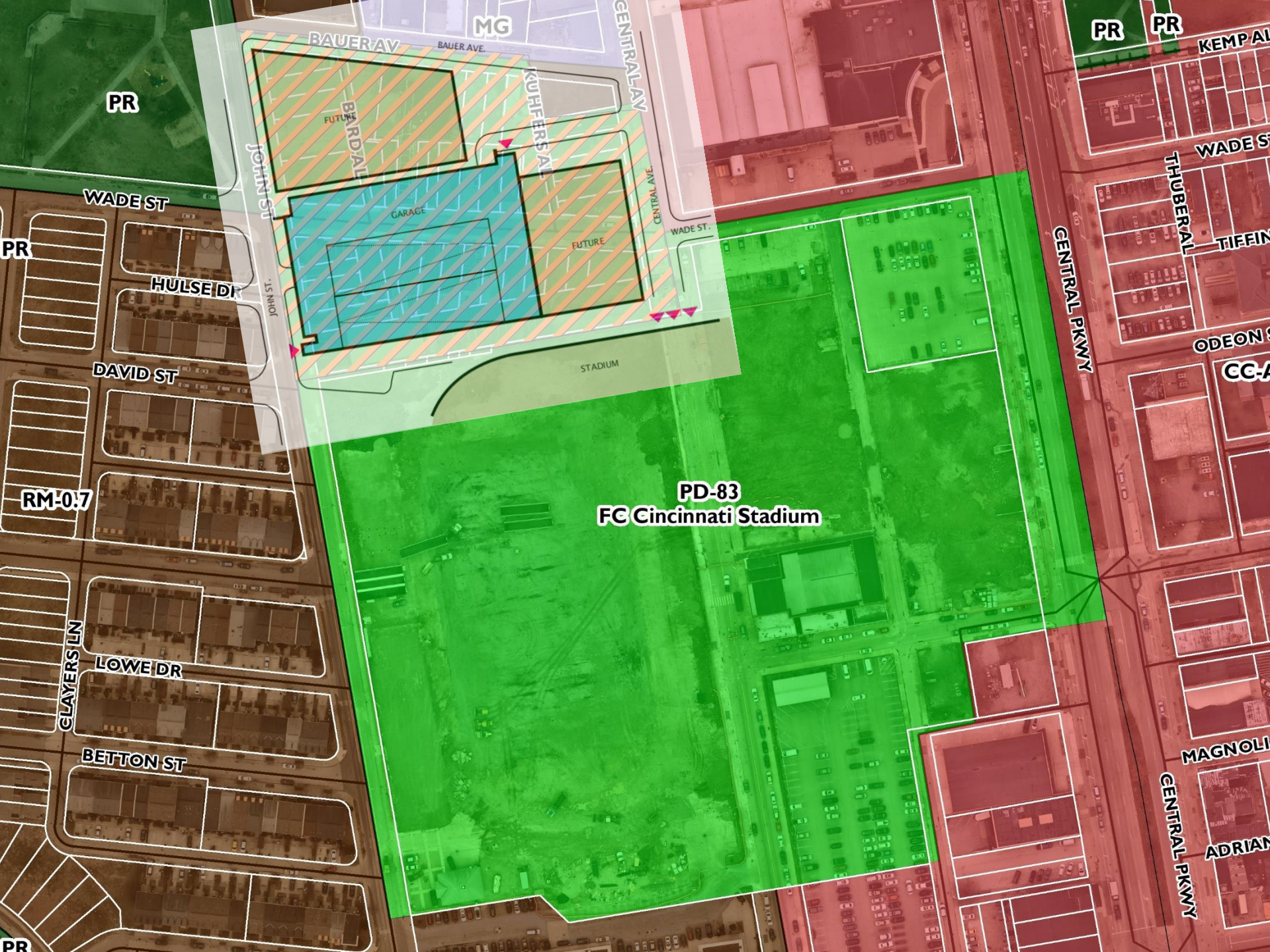
MAGNOLI

CENTRAL PKWY

BETTON ST

ADRIAN

PR



**PD-83
FC Cincinnati Stadium**

PR

MG

PR

PR

WADE ST

JOHN ST

BAUER AV.
BAUER AV.
BAUER AV.

KUHFERAL

CENTRAL AV.

WADE ST

THUBERAL

TIFIN

ODEON

CC-A

CENTRAL PKWY

PR

HULSE DR

DAVID ST

STADIUM

RM-0.7

PD-83

CLAYERS LN

LOWE DR

MAGNOLI

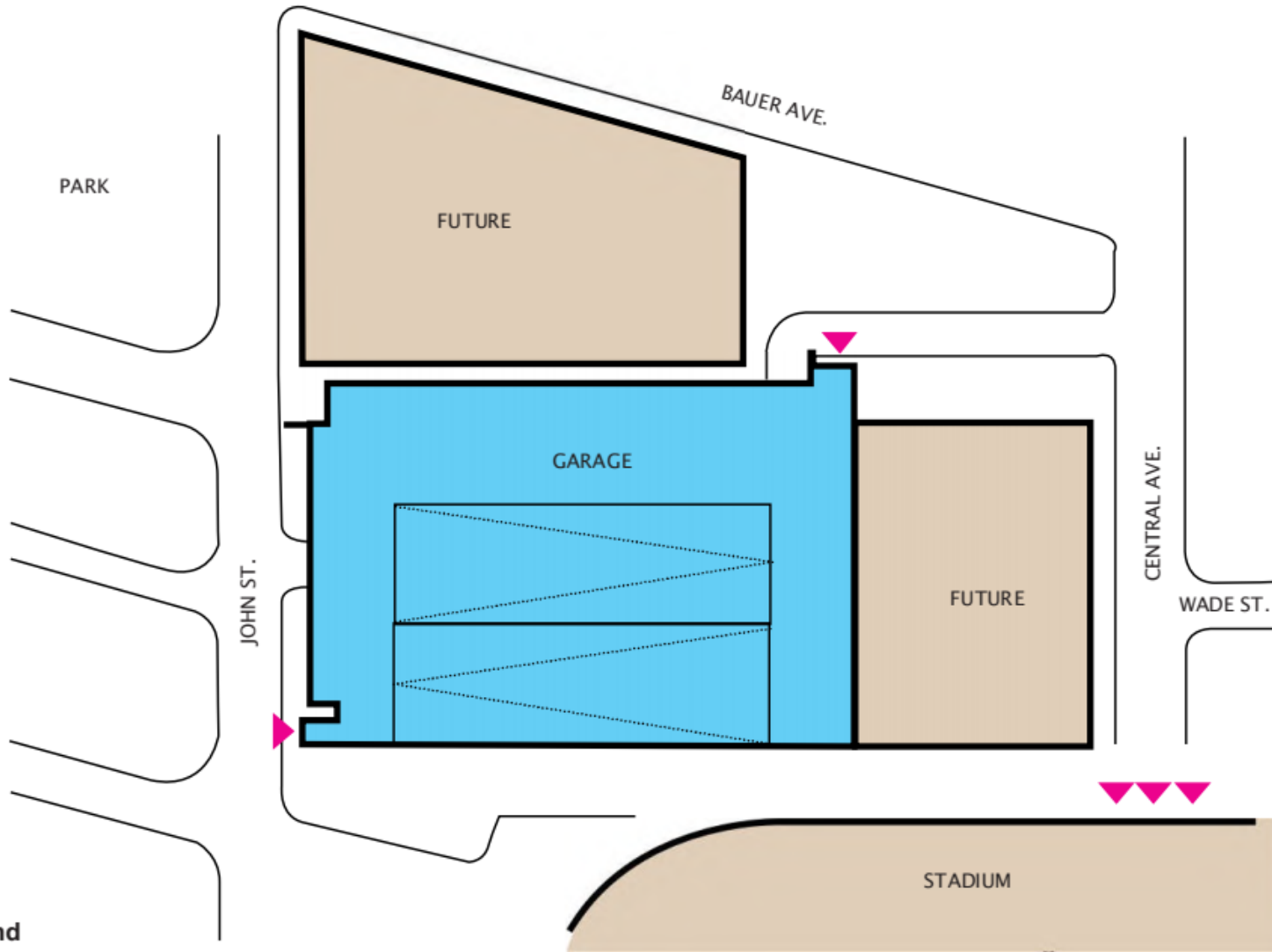
CENTRAL PKWY

BETTON ST

ADRIAN

PR

Site Plan



Site Legend
North Garage

Conceptual Facade Rendering Package

March 30, 2020



Conceptual Façade Rendering



View of North Stair Looking SW
North Garage

Conceptual Façade Rendering Package

March 30, 2020



CITY PLANNING

Conceptual Façade Rendering



View of North Stair Looking South
North Garage

Conceptual Façade Rendering Package

March 30, 2020



CITY PLANNING

Conceptual Façade Rendering



**View of North Stair Looking South Showing Future Buildings
North Garage**

Conceptual Façade Rendering Package

March 30, 2020



CITY PLANNING

Conceptual Façade Rendering



View of NW Corner Looking South
North Garage

Conceptual Façade Rendering Package

March 30, 2020



Conceptual Façade Rendering



**View of NW Corner Looking South Showing Future Buildings
North Garage**

Conceptual Façade Rendering Package

March 30, 2020



CITY PLANNING

Conceptual Façade Rendering



**View of South Entry Looking NE
North Garage**

Conceptual Façade Rendering Package

March 30, 2020



Conceptual Façade Rendering



**View of South Entry Looking NE Showing Future Buildings in Background
North Garage**

Conceptual Façade Rendering Package

March 30, 2020



CITY PLANNING

Signage

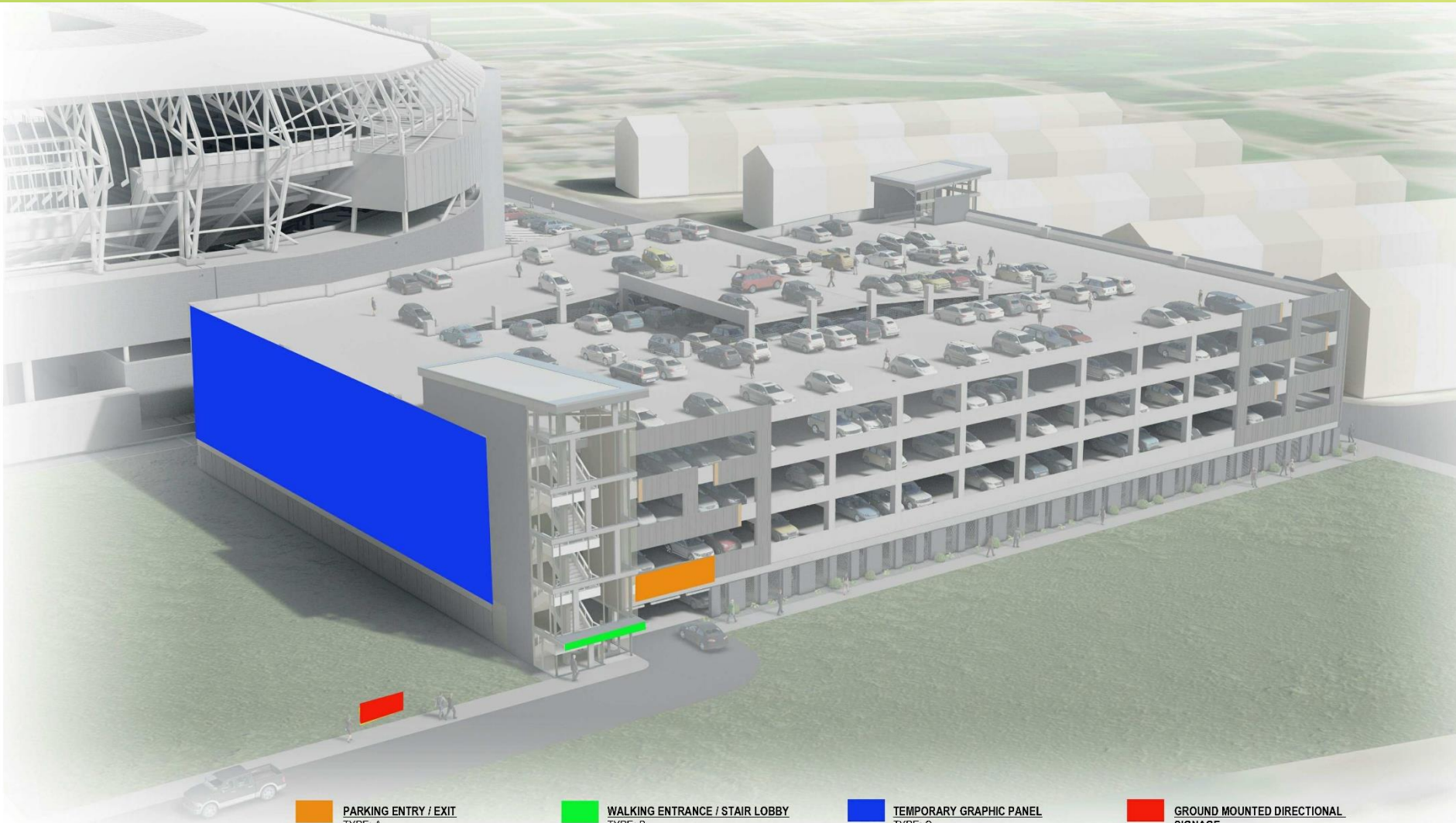


PARKING ENTRY / EXIT
TYPE: A
PURPOSE: CAR ENTRY / EXIT GATE
MATERIAL:
LIGHTING:
SIZE: 6' X 36' = 216 SQF. EACH

WALKING ENTRANCE / STAIR LOBBY
TYPE: B
PURPOSE: PEDESTRIAN ENTRANCE / EXIT
MATERIAL:
LIGHTING:
SIZE: 21.25' X 0.8' = 18 SQF. (SOUTH WEST LOBBY)
22.2' X 0.8' = 17.8 SQF. (NORTH EAST LOBBY)

HAMILTON COUNTY WADE GARAGE
EXTERIOR SIGNAGE / SOUTH WEST VIEW

Signage



PARKING ENTRY / EXIT
TYPE: A
PURPOSE: CAR ENTRY / EXIT GATE
MATERIAL:
LIGHTING:
SIZE: 6' X 36' = 216 SQF. EACH

WALKING ENTRANCE / STAIR LOBBY
TYPE: B
PURPOSE: PEDESTRIAN ENTRANCE / EXIT
MATERIAL:
LIGHTING:
SIZE: 21.25' X 0.8' = 18 SQF. (SOUTH WEST LOBBY)
22.2' X 0.8' = 17.8 SQF. (NORTH EAST LOBBY)

TEMPORARY GRAPHIC PANEL
TYPE: C
PURPOSE: TEMPORARY LARGE
SCALE GRAPHIC AND SPONSOR
RECOGNITION PANEL
MATERIAL:
LIGHTING:
SIZE: 167.17' X 38.17' = 6,380 SQF

**GROUND MOUNTED DIRECTIONAL
SIGNAGE**
TYPE: D
PURPOSE: GROUND MOUNTED
DIRECTIONAL SIGNAGE
MATERIAL:
LIGHTING:
SIZE: 9' X 4' = 36 SQF

HAMILTON COUNTY WADE GARAGE

EXTERIOR SIGNAGE / NORTH EAST VIEW

Process

- Final Development Plans require approval by City Planning Commission
- Virtual Special City Planning Commission meeting scheduled for Friday, May 22nd, 2020 at 9:00 a.m.
- <https://www.cincinnati-oh.gov/planning/about-city-planning/quasi-judicial/>

Question & Answer

- Everyone will be unmuted one-at-a-time
- Use “raise hand” function if you have a follow-up question following your initial question
- Do not use the chat bar for project-related questions (tech issues only)

Contact & Information

- Samantha McLean, City Planner
Samantha.mclean@Cincinnati-oh.gov
513-352-4886
- FCC Zone Change Webpage
www.cincinnati-oh.gov/FCCStadium
- Virtual Special City Planning Commission meeting
scheduled for Friday, May 22nd, 2020 at 9:00 a.m.
<https://www.cincinnati-oh.gov/planning/about-city-planning/quasi-judicial/>