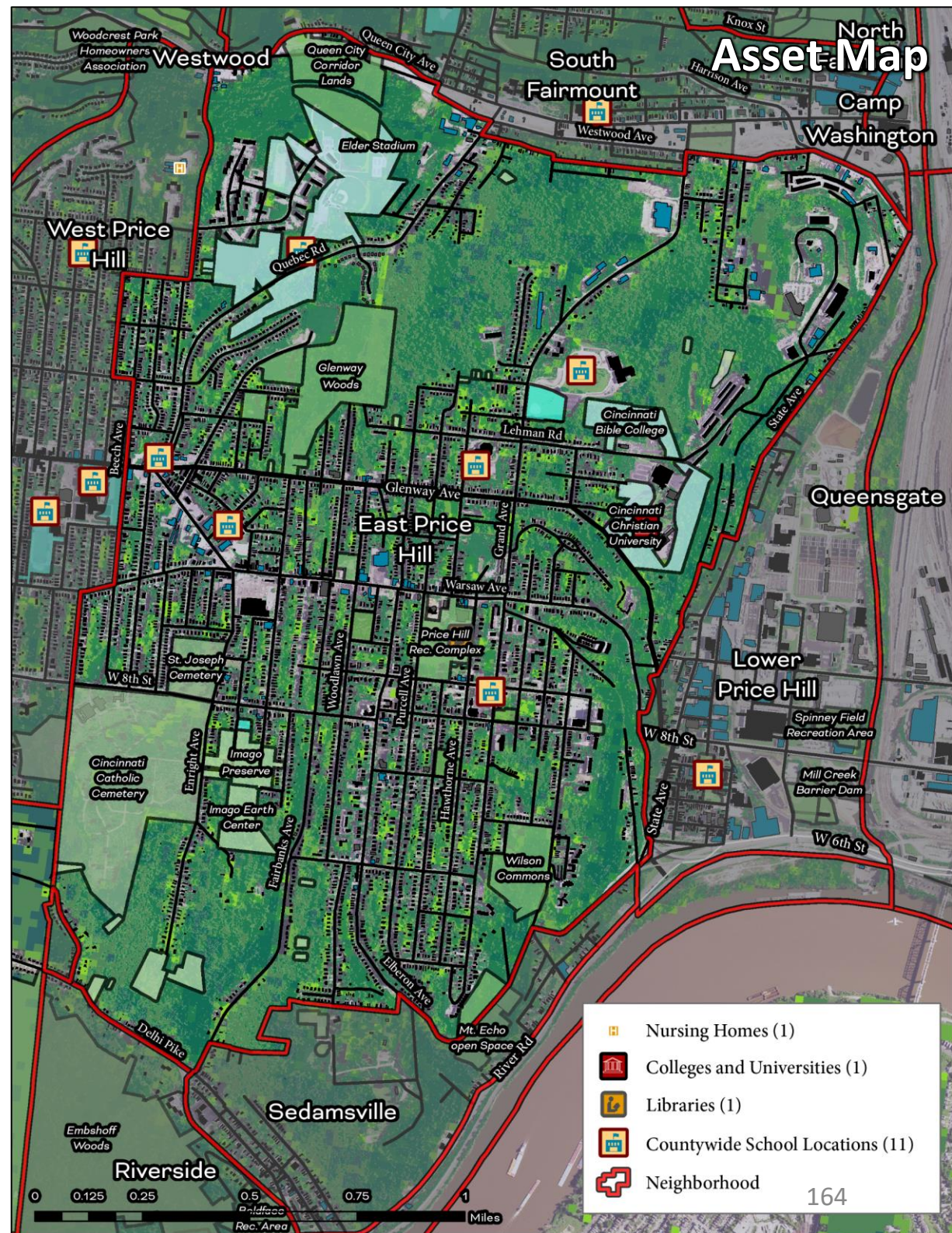


East Price Hill

Cincinnati Neighborhood Profile

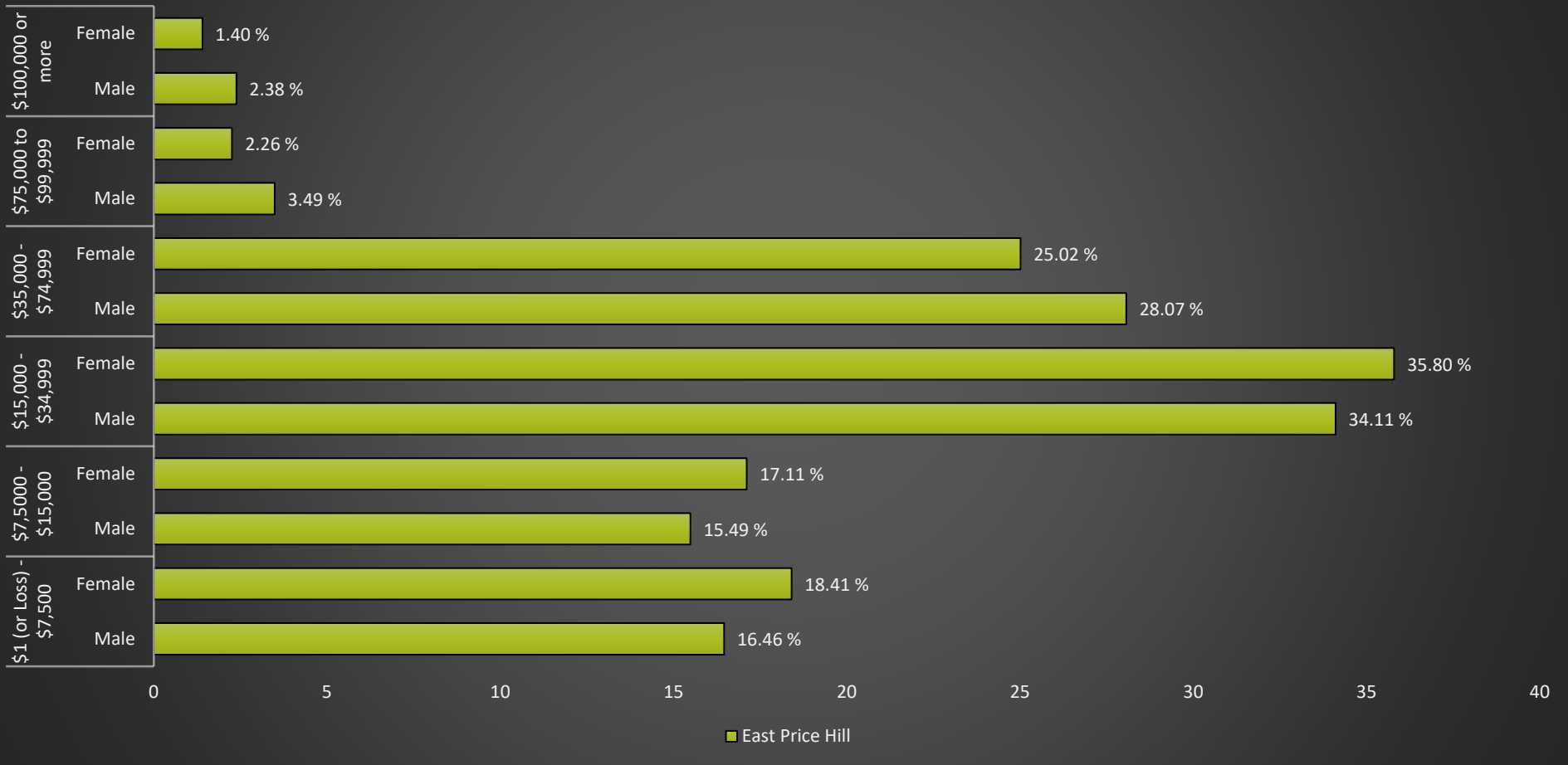
East Price Hill is a mixed-race neighborhood (35.5% Black, 42.3% white, and 31.9% Asian/Hispanic/other) with 14,224 residents. It has active community councils (East Price Community Council), a community development corporation (Price Hill Will), and several guiding community plans (Warsaw Alive! Action Plan (2018) and the Price Hill Plan (2015)). The average life expectancy for the neighborhood is 69.5 (ranked 40th of all communities assessed). East Price Hill has a relatively “average” to “high” prevalence of diabetes (16.4%), high blood pressure (38.1%), kidney disease (3.7%), obesity (45.2%), and heart disease (8.9%) of all communities assessed. 18% of the community lacks health insurance (ranked 41st of all communities assessed). The neighborhood has ~32% tree canopy cover (ranked 17th of all communities assessed) and 14.9% of land in parks and greenspaces (ranked 27th of all communities assessed). It has “low to excellent” access to public transit and “below average” walkability. It has “high” cancer risk from air pollution, potential lead paint exposure, and “high” exposure to potentially polluted water sources. It also has “high” exposure to potentially toxic industrial sites. Around 43.3% of East Price Hill residents are living in poverty (ranked 39th of all communities assessed) and 35.7% are SNAP recipient households (ranked 35th of all communities assessed).



East Price Hill

Cincinnati Neighborhood Profile

East Price Hill: Annual Income by Gender



East Price Hill Notable Indicators

Average Life Expectancy	Exposure to Potentially Toxic Industrial Sites	% of Residents Living in Poverty
69.4 (ranked 40th longest for all communities assessed)	High	43.3% (ranked 39th highest for all communities assessed)

East Price Hill

Cincinnati Neighborhood Profile

People			
Indicator	Rank	%	# of Persons
Population	-	-	14,224
Persons over 65	11	8.2%	1,160
Persons 17 and Under	41	29.6%	4,211
Children Living w/ Grandparents	28	1.6%	225
Race/Ethnicity:			
Black	-	35.5%	5,050
white	-	42.3%	6,022
Asian	-	1.0%	139
Other	-	21.2%	3,013
Latinx	-	10.7%	1,523
Persons 5 and Older in Households w/ Limited English Ability	47	5.5%	788

Health			
Indicator	Rank	Value	
Life Expectancy	40	69.5 years	-
Disease Prevalence Estimates:			
	Rank of % w/Condition	% with Condition	Persons with Condition
Asthma	35	13.6%	1,940
Cancer	19	5.3%	760
Diabetes	29	16.4%	2,327
High Blood Pressure	31	38.1%	5,420
Heart Disease	34	8.9%	1,271
Kidney Disease	29	3.7%	530
Obesity	33	45.2%	6,432
Lack of Health Insurance	41	18.2%	2,585
Persons w/ Independent Living Difficulty	33	3.7%	528
Persons Living w/ Disability	38	17.4%	2,480

Ecosystems and Infrastructure		
Indicator	Rank	Value
Tree Canopy Coverage	17	32.0%
Greenness of Land Surface	21	57.3%
Percent Land in Parks and Greenspaces	27	14.9%
Impervious Surface	21	29%
Heat Island Exposure	8	0.12
Walkability	-	Below Average to Most Walkable
Persons w/ Low-Income and Low Food Access	13	7.2%
Transit Accessibility	-	Low to Excellent
Daytime Population vs. Resident Population	13	57.4%
Commuters Leaving Each Day	-	5,469
Commuters Using Public Transit	34	11.9%

East Price Hill

Cincinnati Neighborhood Profile

Socio-Economic Indicators			
Indicator	Rank	%	#
Persons Living in Poverty	39	43.3%	6,162
SNAP Recipient Households	35	35.7%	2,015
Educational Attainment:			
Less than High School	-	14.5%	-
HS or Equivalent	-	18.1%	-
Some College	-	11.5%	-
Associate's Degree	-	4.3%	-
Bachelor's Degree or Higher	-	10.0%	-
Educational Attainment Index	38	0.30	-
Extreme Housing Burdens:			
Renter-Occupied Housing (as % of All Housing Units)	29	67.4%	3,801
Renters Spending 30% of Income or More on Rent + Utilities	31	30.9%	1,740
Renters Spending 50% of Income or More on Rent + Utilities	33	18.0%	1,015
Homeowners Spending 30% of Income or More on Mortgage + Utilities	7	12.5%	229
Average Energy Costs (as % of Income)	44	7.2%	-
Persons without Vehicle Access	31	10.0%	1,415

Built Environmental Hazards		
Indicator	Relative Exposure Level	Value
Traffic Exposure	Low	-
Potential Lead Paint Exposure (Houses Built pre-1960)	High	67.30%
Cancer Risk from Air Pollution	High	-
Respiratory Disease Risk from Air Pollution	Moderate	-
Proximity to Water Pollution Sources	High	-
PM2.5 Levels in Air, µg/m3	Moderate	9.71
Ozone Concentration, ppb	Low	46.34
Diesel Particulate in Air, µg/m3	High	0.93
Proximity to Superfund Sites	Low	-
Proximity to Potentially Toxic Industrial Activity	High	-
Proximity to Hazardous Waste Treatment and Disposal Facilities	Low	-

Neighborhood Planning	
Indicator	Description
Community Councils	East Price Hill Community Council
Community Development Corporations	Price Hill Will
Community Plans	Warsaw Alive! Action Plan (2018); Price Hill Plan (2015)